

CBRS – Innovative, Reliable Connectivity



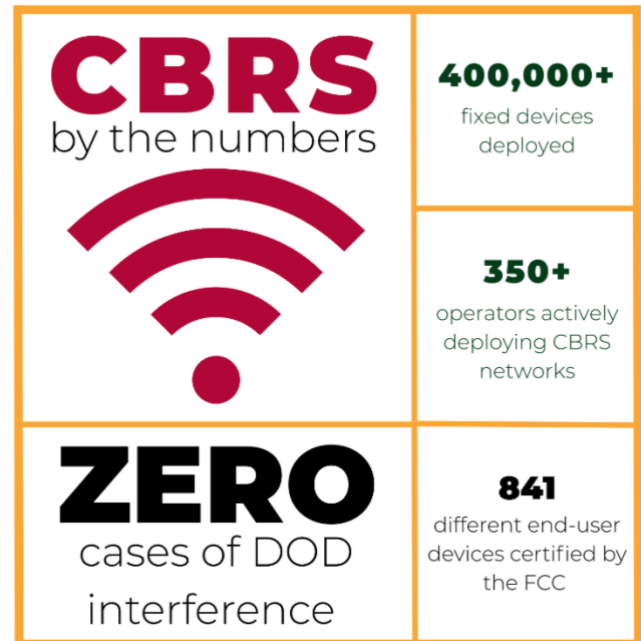
BROADBAND
WITHOUT
BOUNDARIES

Citizens Broadband Radio Service (CBRS) is a specific band of spectrum – radio waves that carry wireless internet – that is shared in an organized, prioritized way among the federal government, private businesses, schools, hospitals and many others. CBRS proves that commercial and government users can coexist and share wireless signals while avoiding interference and maximizing efficiency – **all while increasing access to fast, reliable connectivity for more communities.**

Why Is It Important?

The mid-band spectrum in which CBRS operates brings a great balance of speed, range, and strength – it goes fast, far and through obstacles. But spectrum is finite. With the federal government occupying most spectrum, CBRS increases access to quality broadband by allowing federal and commercial users to share without interference.

- ❖ CBRS bridges the digital divide.
- ❖ CBRS is tech-neutral, accommodating a wide variety of use cases.
- ❖ CBRS plays an important role in the WISP ecosystem: nearly 70% of WISPs use CBRS to deliver broadband to their largely rural communities.
- ❖ There have been **no reports** of interference with Defense Department users since CBRS's launch in 2020.



Connecting Unserved and Underserved Communities

Smaller operators, rural WISPs, enterprises, schools, hospitals, and farms can affordably access the necessary spectrum to meet their diverse needs thanks to CBRS. By expanding broadband access in a cost-effective way and thanks to its efficiency, these networks are particularly well-suited for remote areas where fewer towers and less infrastructure are required.

What's Impacted?

Smaller license areas, easy access, and smart systems that help devices share wireless signals all encourage more competition and investment. CBRS is available in all 50 states, is built into 90% of U.S. smartphones, and CBRS General Authorized Access (GAA) Licensed by Rule is being deployed for various uses including:

- ❖ Rural connectivity
- ❖ Smart factories
- ❖ Manufacturing
- ❖ Precision agriculture
- ❖ Health information technology and telemedicine
- ❖ Distance learning
- ❖ Public safety
- ❖ Mobile communications
- ❖ Private networks

CBRS is an innovative and effective spectrum sharing model that is helping end the digital divide and ensuring all communities have access to fast, reliable internet. Proposals to curtail or eliminate the use of CBRS will have far-reaching negative consequences for innovation and deployment.